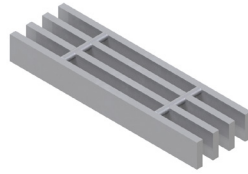


LOAD TABLES | STANDARD, IMPERIAL

LOAD TABLES - ADA

Grating Type: 11W4
 Design Code: NAAMM MBG 534
 Material: ASTM A1011CS Type B
 Surface: Smooth



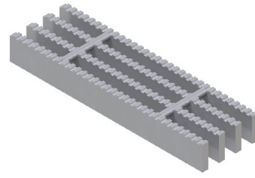
U = Safe Uniform Load (lbs/ft²)
 D_u = Deflection Due to Safe Uniform Load (in)
 C = Safe Concentrated Load (lbs/ft of grating width)
 D_c = Deflection Due to Safe Concentrated Load (in)
 Allowable Extreme Fiber Stress = 18 ksi

Bearing Bar Size (inches)	Approx. Weight (lbs/ft ²)	Ped. Span (inches)	Load / Deflection	Span (ft -in)												Section Properties			
				2' - 0"	2' - 6"	3' - 0"	3' - 6"	4' - 0"	4' - 6"	5' - 0"	5' - 6"	6' - 0"	6' - 6"	7' - 0"	7' - 6"	8' - 0"	S _x (in ³)/ft	I _x (in ⁴)/ft	
1" x 1/8"	8.25	59	U	1,091	698	485	356	273	215	175								0.364	
			D _u	0.07	0.12	0.17	0.23	0.30	0.38	0.47									0.182
			C	1,091	873	727	623	545	485	436									
			D _c	0.06	0.09	0.13	0.18	0.24	0.30	0.37									
1 1/4" x 3/16"	14.82	77	U	2,557	1,636	1,136	835	639	505	409	338	284	242					0.852	
			D _u	0.06	0.09	0.13	0.18	0.24	0.30	0.37	0.45	0.54	0.63						
			C	2,557	2,045	1,705	1,461	1,278	1,136	1,023	930	852	787						
			D _c	0.05	0.07	0.11	0.15	0.19	0.24	0.30	0.36	0.43	0.50						
1 1/2" x 3/16"	17.64	89	U	3,682	2,356	1,636	1,202	920	727	589	487	409	349	301	262			1.227	
			D _u	0.05	0.08	0.11	0.15	0.20	0.25	0.31	0.38	0.45	0.52	0.61	0.70				
			C	3,682	2,945	2,455	2,104	1,841	1,636	1,473	1,339	1,227	1,133	1,052	982				
			D _c	0.04	0.06	0.09	0.12	0.16	0.20	0.25	0.30	0.36	0.42	0.49	0.56				
1 3/4" x 3/16"	20.45	99	U	5,011	3,207	2,227	1,636	1,253	990	802	663	557	474	409	356	313		1.670	
			D _u	0.04	0.07	0.10	0.13	0.17	0.22	0.27	0.32	0.38	0.45	0.52	0.60	0.68			
			C	5,011	4,009	3,341	2,864	2,506	2,227	2,005	1,822	1,670	1,542	1,432	1,336	1,253			
			D _c	0.03	0.05	0.08	0.10	0.14	0.17	0.21	0.26	0.31	0.36	0.42	0.48	0.54			
2" x 3/16"	23.27	110	U	6,545	4,189	2,909	2,137	1,636	1,293	1,047	866	727	620	534	465	409		2.182	
			D _u	0.04	0.06	0.08	0.11	0.15	0.19	0.23	0.28	0.34	0.39	0.46	0.52	0.60			
			C	6,545	5,236	4,364	3,740	3,273	2,909	2,618	2,380	2,182	2,014	1,870	1,745	1,636			
			D _c	0.03	0.05	0.07	0.09	0.12	0.15	0.19	0.23	0.27	0.31	0.36	0.42	0.48			
2 1/2" x 3/16"	28.90	130	U	10,227	6,545	4,545	3,340	2,557	2,020	1,636	1,352	1,136	968	835	727	639		3.409	
			D _u	0.03	0.05	0.07	0.09	0.12	0.15	0.19	0.23	0.27	0.31	0.36	0.42	0.48			
			C	10,227	8,182	6,818	5,844	5,114	4,545	4,091	3,719	3,409	3,147	2,922	2,727	2,557			
			D _c	0.02	0.04	0.05	0.07	0.10	0.12	0.15	0.18	0.21	0.25	0.29	0.34	0.38			

Spans and loads in red exceed a deflection of 1/4" for uniform loads of 100 lbs./sq. ft. Experience has shown that 1/4" deflection is the maximum deflection to give pedestrian comfort, but can be exceeded for other types of loads at the discretion of the specifying professional.

LOAD TABLES - ADA

Grating Type: **11W4**
 Design Code: **NAAMM MBG 534**
 Material: **ASTM A1011CS Type B**
 Surface: **Serrated**



U = Safe Uniform Load (lbs/ft²)
 D_u = Deflection Due to Safe Uniform Load (in)
 C = Safe Concentrated Load (lbs/ft of grating width)
 D_c = Deflection Due to Safe Concentrated Load (in)
 Allowable Extreme Fiber Stress = 18 ksi

Bearing Bar Size (inches)	Approx. Weight (lbs/ft ²)	Ped. Span (inches)	Load / Deflection	Span (ft -in)												Section Properties			
				2' - 0"	2' - 6"	3' - 0"	3' - 6"	4' - 0"	4' - 6"	5' - 0"	5' - 6"	6' - 0"	6' - 6"	7' - 0"	7' - 6"	8' - 0"	S _x (in ³)/ft	I _x (in ⁴)/ft	
1" x 1/8"	8.25	48	U	614	393	273	200	153										0.205	
			D _u	0.10	0.16	0.22	0.30	0.40											0.077
			C	614	491	409	351	307											
			D _c	0.08	0.12	0.18	0.24	0.32											
1 1/4" x 3/16"	14.82	65	U	1,636	1,047	727	534	409	323	262	216							0.545	
			D _u	0.07	0.12	0.17	0.23	0.30	0.38	0.47	0.56								0.273
			C	1,636	1,309	1,091	935	818	727	655	595								
			D _c	0.06	0.09	0.13	0.18	0.24	0.30	0.37	0.45								
1 1/2" x 3/16"	17.64	77	U	2,557	1,636	1,136	835	639	505	409	338	284	242					0.852	
			D _u	0.06	0.09	0.13	0.18	0.24	0.30	0.37	0.45	0.54	0.63						0.533
			C	2,557	2,045	1,705	1,461	1,278	1,136	1,023	930	852	787						
			D _c	0.05	0.07	0.11	0.15	0.19	0.24	0.30	0.36	0.43	0.50						
1 3/4" x 3/16"	20.45	89	U	3,682	2,356	1,636	1,202	920	727	589	487	409	349	301	262			1.227	
			D _u	0.05	0.08	0.11	0.15	0.20	0.25	0.31	0.38	0.45	0.52	0.61	0.70				0.920
			C	3,682	2,945	2,455	2,104	1,841	1,636	1,473	1,339	1,227	1,133	1,052	982				
			D _c	0.04	0.06	0.09	0.12	0.16	0.20	0.25	0.30	0.36	0.42	0.49	0.56				
2" x 3/16"	23.27	99	U	5,011	3,207	2,227	1,636	1,253	990	802	663	557	474	409	356	313		1.670	
			D _u	0.04	0.07	0.10	0.13	0.17	0.22	0.27	0.32	0.38	0.45	0.52	0.60	0.68			1.462
			C	5,011	4,009	3,341	2,864	2,506	2,227	2,005	1,822	1,670	1,542	1,432	1,336	1,253			
			D _c	0.03	0.05	0.08	0.10	0.14	0.17	0.21	0.26	0.31	0.36	0.42	0.48	0.54			
2 1/2" x 3/16"	28.90	120	U	8,284	5,302	3,682	2,705	2,071	1,636	1,325	1,095	920	784	676	589	518		2.761	
			D _u	0.03	0.05	0.07	0.10	0.13	0.17	0.21	0.25	0.30	0.35	0.41	0.47	0.53			3.107
			C	8,284	6,627	5,523	4,734	4,142	3,682	3,314	3,012	2,761	2,549	2,367	2,209	2,071			
			D _c	0.03	0.04	0.06	0.08	0.11	0.13	0.17	0.20	0.24	0.28	0.32	0.37	0.42			

Spans and loads in red exceed a deflection of 1/4" for uniform loads of 100 lbs./sq. ft. Experience has shown that 1/4" deflection is the maximum deflection to give pedestrian comfort, but can be exceeded for other types of loads at the discretion of the specifying professional.

LOAD TABLES - SD IMPERIAL