

LOAD TABLES | STAIR TREADS

Welded steel stair treads are the most widely used for their strength and ease of installation and are universally used in most industrial and commercial applications. Both can be ordered with a serrated surface for additional safety.

Rectangular bar stair treads provide a high strength and stiffness-to-weight ratio and are available with a serrated surface when additional safety is required.

All stair treads are custom fabricated to meet the size, width and length specifications of a particular job. In addition, end plates can be custom fabricated to meet special bolt hole size or location requirements.

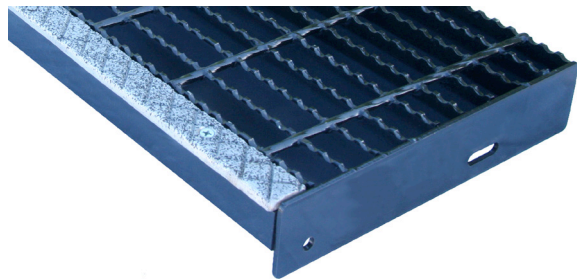
Steel nosings are available to add strength at the point of greatest impact and provide a definitive visible edge for extra safety. Choose our checkered plate nosing for normal use.



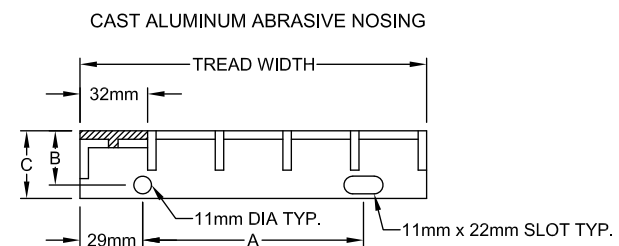
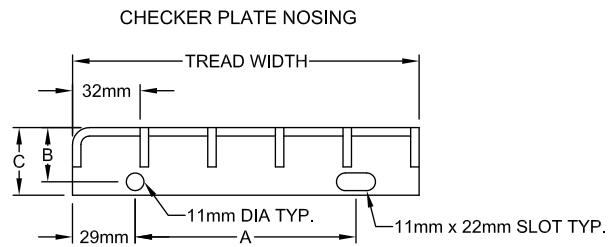
Stair Tread Types



Checker Plate Nosing (CP)



Cast Aluminum Abrasive Nosing (CAAN)



End Plate Dimensions		
Grating Depth	"B" Dimension	"C" Dimension
up to 32m	44mm	64mm
38mm	57mm	76mm

See Tread Width and Bolt Hole Spacing for "A" Dimension

End Plate Dimensions		
Grating Depth	"B" Dimension	"C" Dimension
up to 1-1/4"	1-3/4"	2-1/2"
1-1/2"	2-1/4"	3"

See Tread Width and Bolt Hole Spacing for "A" Dimension

Tread Width and Bolt Hole Spacing

30W102

No. of Bearing Bars and Nosing	Bearing Bar	**Bolt Hole Spacing "A"
	5mm	
Tread Width		
5	157mm	64mm
6	187mm	115mm
7	217mm	115mm
8	248mm	178mm
9	278mm	178mm
10	308mm	178mm

**See Drawing Above

Tread Width and Bolt Hole Spacing

19W4

No. of Bearing Bars and Nosing	Bearing Bar	**Bolt Hole Spacing "A"
	3/16"	
Tread Width		
5	6-3/16"	2-1/2"
6	7-3/8"	4-1/2"
7	8-9/16"	4-1/2"
8	9-3/4"	7"
9	10-15/16"	7"
10	12-1/8"	7"

**See Drawing Above

Maximum Tread Length (mm)

Bar Size (mm)	Smooth	Serrated
	30W102	30W102
25 x 5	1041	863
32 x 5	1422	1270
38 x 5	1676	1600

Data Created Based on NAAMM 531-17:

- 1.32kN point load at center, loading only first five bars, up to 1.7m.
- 1.32kN point loads at third-points, loading only first five bars, when > 1.7m.
- L/240 deflection limit on both.

Maximum Tread Length (in)

Bar Size (in)	Smooth	Serrated
	19W4	19W4
1 x 3/16	41	34
1/4 x 3/16	56	50
1/2 x 3/16	66	63

Data Created Based on NAAMM 531-17:

- 300-lb point load at center, loading only first five bars, up to 5'-6".
- 300-lb point loads at third-points, loading only first five bars, when > 5'-6".
- L/240 deflection limit on both.